

2015/6/25

Ver3.16.0

## Kyocera USB Modem Driver

[kc02us\_setup\_x64.msi/kc02us\_setup\_x86.msi installer]

### Installation/Uninstallation Procedure

#### Contents

[1. Supported OS](#)

[2. Supported devices](#)

[3. Before Installation](#)

[4. Installation Procedure](#)

[5. Uninstallation Procedure](#)

[6. Attention](#)

[7. Trouble Shooting](#)

\*The messages described in this manual are based on WINDOWS 7 x64 SP1.

Therefore, the messages may be not coincident with some devices.

## 1. Supported OS

Supported OS are as follows.

- Windows XP 32bit
- Windows Vista 32bit/64bit
- Windows 7 32bit/64bit
- Windows 8 32bit/64bit

## 2. Supported devices

Supported devices are as follows.

Kyocera devices.

## 3. Before Installation

If your PC is installed AntiVirus Software, please stop the service temporarily, because installation may fail.

You must not connect the handset to the PC which old USB drivers were installed.

If you already installed the old USB drivers for Kyocera devices (See “2. Supported devices”), please uninstall them as follows.

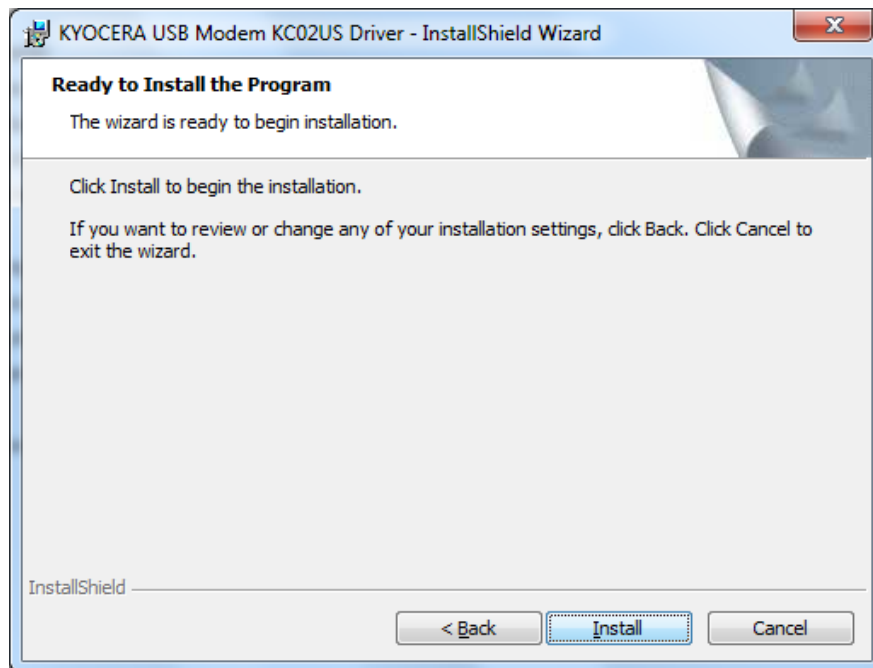
- A) Disconnect the handset from USB port on the PC.
- B) Select “Start” button of Windows.
- C) Select Control panel.
- D) Select “Add or Remove Programs”.
- E) Select “KYOCERA USB Modem SYxx Driver”, “KYOCERA ADB SYxx Driver”, “KYOCERA NDIS SYxx Driver”, “KYOCERA USB Modem KC01 Driver” or “KYOCERA USB Modem KC02US Driver”.
- F) Click “Remove” Button.
- G) Restart PC after uninstallation.
- H) If two or more old USB drivers were installed, please uninstall them all.

## 4. Installation Procedure

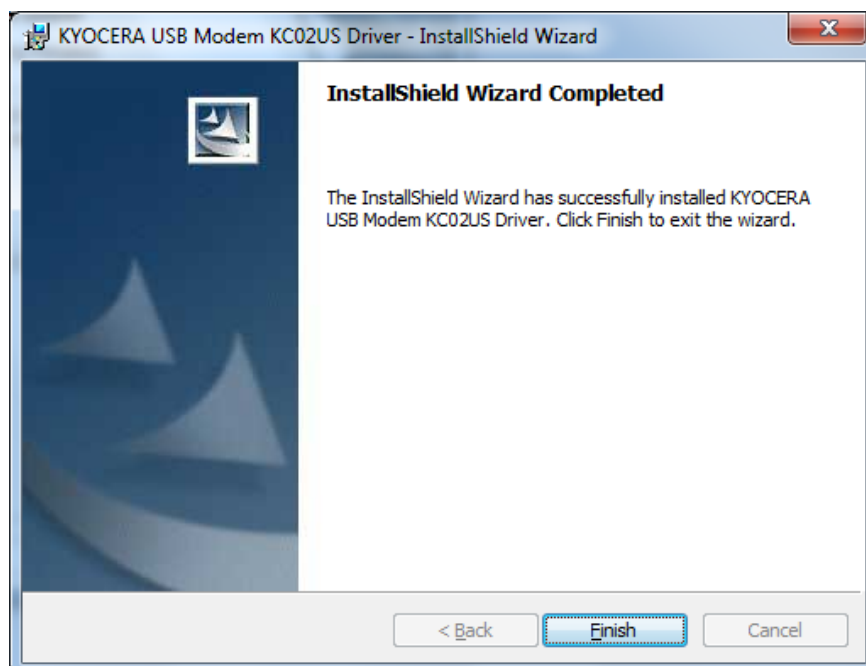
- A) Disconnect the handset from USB port on the PC.
- B) If your PC is 32bit OS, press kc02us\_setup\_x86.msi.  
If your PC is 64bit OS, press kc02us\_setup\_x64.msi.
- C) Install Driver dialog will be launched, and then press [Next] button.



D) Press [Install] button.



E) Installation is completed when the dialog "InstallShield Wizard Completed" is displayed.  
Press [Finish] button to continue procedure.



F) Connect the handset to USB port on the PC.

The handset will be recognized automatically by plug-and-play.

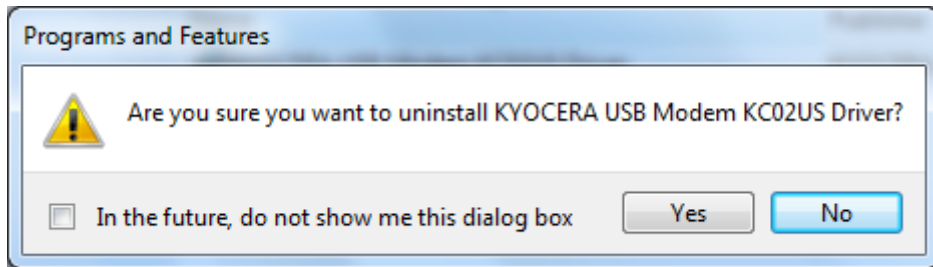
G) Installation is now completed.

\*Confirm if the driver is working properly by Device Manager.

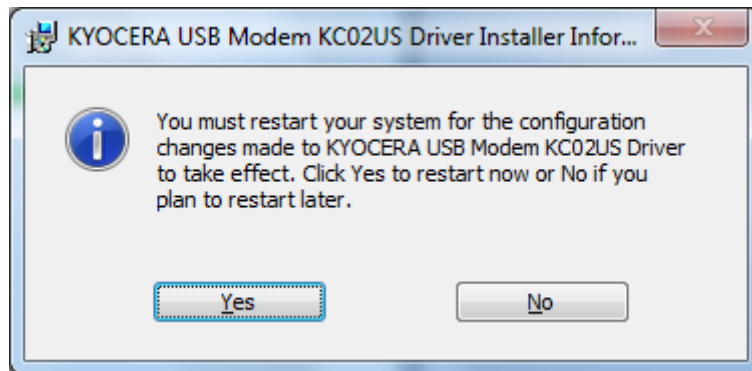
Press "Control panel"/"System"/"Hardware"/"Device Manager".

## 5. Uninstallation Procedure

- A) Disconnect the handset from USB port on the PC.
- B) Uninstall Driver  
Press "Control Panel"/"Add or Remove Programs"  
If either "Kyocera USB Modem KC02US Driver" exists, press [Change/Remove].
- C) Press [Yes] button when "Uninstall Driver" dialog is displayed.



- D) When uninstallation is completed, the message to restart PC will be displayed, then press [Yes] button.



\*NOTE: Please restart PC after uninstallation. Error could occur if driver is reinstalled without restart. Restart only once after all the drivers are uninstalled if few drivers need to be uninstalled.

Uninstallation is now completed.

---

## **6. Attention**

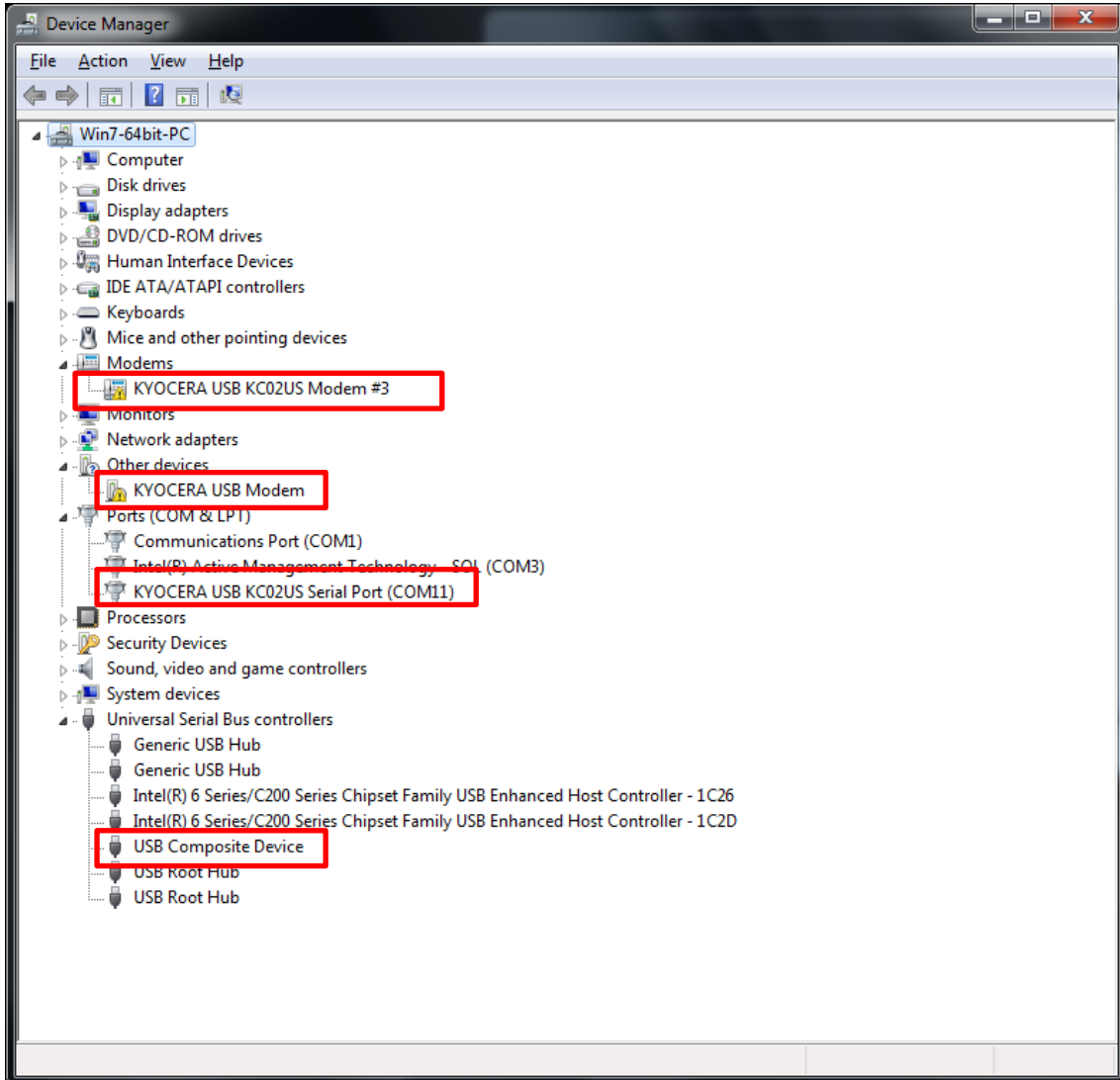
\*Please disconnect the handset from USB port on the PC before execute Installation/Uninstallation procedure.

Error could occur, if handset is connected to USB port.

## 7. Trouble Shooting

Case 1) The "!" mark does not disappear from the configuration of the device

- 1) Open "Device Manager"
- 2) Open "Universal Serial Bus controllers"





3) Please follow the following steps

